

GROUP LEADERS

Salary Range: JGL circa £55,000; SGL £75,000 upwards depending on experience

Generous core support in an outstanding and inspiring environment

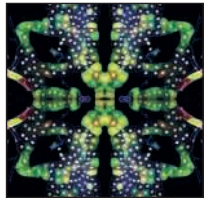


The Cancer Research UK Beatson Institute in Glasgow is one of Europe's leading cancer research centres, supporting cutting edge research into the molecular mechanisms of cancer development that is focused on the understanding of cancer growth/metabolism, recurrence and metastasis.

It's an exciting time to join the Beatson. Our new Director, Prof. Owen Sansom's vision is to focus on the application/translation of our research in the clinical environment, whilst continuing to conduct cutting edge fundamental research to understand the mechanisms of cancer. Ultimately we want to develop better treatments to improve the quality of life for cancer patients.

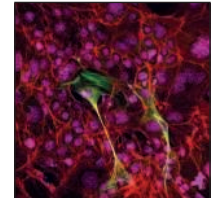
With significant funding from CRUK and success in securing other major sources of funding – CRUK Grand Challenge, Precision Panc - we are expanding several of our research programmes and are inviting applications from successful and highly motivated scientists to establish an independent research group focused on our research strategy.

Collaboration is at the heart of everything we do. The Beatson Institute provides an outstanding research environment, underpinned by state-of-the-art core services and advanced technologies, including highly resourced facilities for metabolomics, imaging (including PET) and mouse models.



In addition, the Institute also benefits from close interactions with the University of Glasgow – it has strong links with the Institute of Cancer Sciences and is a key partner in the Cancer Research UK Glasgow Centre (www.glasgowcancer.org).

We currently have a number of vacancies for Group Leaders at the Institute. You may be a postdoc on the brink of establishing your first research group or a Senior Group Leader who believes that you can significantly contribute to our research strategy and vision. Either way, you must have a relevant PhD and post-doctoral/group leader experience in one of our areas of scientific research, as well as the necessary communication, team-working and scientific leadership skills required to establish your own outstanding research programme.



You will be supported by a generous package that includes a competitive personal salary and core funding to recruit several positions with running costs. High quality lab space is also provided. Further information on our research activities, infrastructure and facilities is available on our website www.beatson.gla.ac.uk

The Institute is located at the edge of the cosmopolitan and vibrant city of Glasgow, close to the west coast of Scotland and at the gateway to the spectacular Highlands and Islands, making it an excellent place to live and work.

Expressions of interest, including CV, a brief outline of future research plans and names of three referees, should be made via our website at www.beatson.gla.ac.uk/Careers/Group-Leaders/

Informal enquiries can be sent to Professors Owen Sansom or Jim Norman (o.sansom@beatson.gla.ac.uk or j.norman@beatson.gla.ac.uk)

Closing date: 1st July 2018